

# SPIRIT

The Leelanau School Magazine



sustaining  
Leelanau

Fall 2023

# sustaining belonging

When I have the privilege of speaking with Leelanau alumni, they describe a school where they found a home. Whether reflecting on their caring teachers, launching lifelong friendships, or the sanctuary of our natural environment, the common thread is a sense of “belonging” that allowed them to succeed as students. Across the decades, they share an identity and sense of connection.

Throughout the study of human behavior, it has long been recognized that “belonging” is a primal instinct. Instinct tells us that our chances of happiness and well-being are increased significantly within a community. We make choices based largely upon how our actions sustain this sense of belonging - of feeling accepted within our circle.

**When belonging is established, we feel safe and more willing to be vulnerable to ideas and learning.**

Trying new things, making friends, resolving conflicts, self-advocating, and overcoming doubts all require vulnerability to newness facilitated by this sense of belonging. Because schools are in the business of newness in knowledge, talents, and goals, they must be a place that attends to belonging. We need not have the same abilities or perspectives, but we must feel value from others in what we have to offer and trust in the communal grace allowing us to venture out of our comfort zones.

In order to construct an environment that sustains a sense of belonging, Leelanau has chosen to be a deliberately small school. This allows students to be seen, heard, and known — to each other and their faculty. We also make sure we celebrate growth daily — whether in academics, relationships, or in achieving personal goals. In doing so, we establish communal support in each person’s journey. We use our residential communities as learning labs, developing skills for navigating life interconnected to others and practices of self-care. We teach restorative justice as a safe and successful means of cleaning up the messes we will inevitably make as struggling humans. And we reflect on our community values and adventuring in methods to make value-learning apparent and useful to our future.

**In our current world, where connectivity has become a data algorithm, and belonging is as fleeting as the current group chat, we need to present adolescents with a sense of belonging that is authentic, sincere, and lasting.**

We lean into learning as a humane social experience from which happiness and well-being are born. Such is the spirit that has sustained Leelanau since its founding and remains active today: a spirit that weaves us all together across generations.



Sincerely,

Handwritten signature of Rob Hansen in blue ink.

Rob Hansen, Head of School



# SPiRiT

THE LEELANAU SCHOOL MAGAZINE

SPiRiT is published by The Leelanau School  
Offices of Alumni, Development, Admission,  
Marketing and Communications

SUBSCRIBE TO OUR MAILING LIST  
OR COMMENT ON THIS EDITION AT:

Office of Alumni and Development  
The Leelanau School  
One Old Homestead Road  
Glen Arbor, MI 49636  
231.334.5841  
alumni@leelanau.org or  
development@leelanau.org

SUBMIT ALUMNI NEWS TO:

leelanau.org/update or  
alumni@leelanau.org

CONTRIBUTING WRITERS  
AND EDITORS:

Rob Hansen, Kate Olson,  
Mike Belsky, Kate Caliri

CONTRIBUTING PHOTOGRAPHERS:

Chris Hintz, iSee Communications,  
Joe Clark '06, Rob Karner Photography,  
Leelanau Faculty, Staff, and Students  
Leelanau Archives

GRAPHIC DESIGN:  
Kate Olson

The Leelanau School does not  
discriminate on the basis of race, color,  
ethnicity, national origin, religion, sex,  
sexual orientation, gender identity, age,  
disability, height, weight, marital status,  
or veteran status, or any other basis  
prohibited by applicable law, in its  
programs and activities.

The Leelanau School is a Non-Profit  
501(c)3 Corporation | Tax ID# 38-6061392

# contents

- 2 sustain belonging
- 5 what sustains us
- 6 teaching sustainability
- 8 student-centered learning
- 10 sustained growth
- 12 emerging leaders
- 14 financial sustainability
- 16 so much goodness
- 18 gifts that sustained us
- 20 we are not a museum
- 22 sustained friendships



The Leelanau School ignites a passion for learning in a boarding school environment where students thrive by engaging academically and celebrating everyone's unique learning styles in a culture of acceptance, preparing for successful and meaningful lives in higher education, careers, citizenship, and service.





## sustain /sə'steɪn/

Other forms: sustained; sustaining; sustains

Sustain means to support something or keep it going. If you get hungry in the mid-afternoon, you might try snacking to sustain your energy through dinner. Beams and rafters sustain a roof — they keep it up. If you sustain a conversation over the course of hours, you keep it going during that time. If you sustain an injury, it means you are injured. If you sustain an interest in what you're studying, it means that you're just as excited about the subject after studying as you are when you began.

vocabulary.com

# what sustains us?

**Part of the wonder and excitement of September's opening weeks is what we do - and don't know - about our incoming students.**

They arrive with a laundry basket full of recommendations, experiences, and expectations. Returning students reappear with a summer of growth and new or familiar baggage. The mix is unpredictable and exhilarating. The chemistry equation is yet to be solved. The possibilities are limitless.

The shared goals we set for each other are simple yet complex; to create a sense of sustained belonging and joyful learning. As educators, we need to ramp up or revive a sense of joy in learning. We must interact with students in ways that deliver assurance and success. As mentors, we must create hurdles (aka learning experiences) that teach confidence and composure. We must grow with them as trusted adults and friends.

**The following pages describe how we approach this path to learning — together. Thank you for helping us sustain our journey!**





“Those who contemplate the beauty of the earth find reserves of strength that will endure as long as life lasts.”

– Rachel Carson

## teaching sustainability

**Hands-on. In the field. Experiential.**

For nearly ten decades, The Leelanau School has utilized and benefited from the beauty of our natural surroundings. The campus' prime location along Lake Michigan, the Crystal River, and under a canopy of pines and oaks has influenced the lives of everybody who has stepped onto campus.

This past year, expanded course offerings in sustainability - greenhouse, freshwater ecology, and ornithology - supplemented biology, chemistry, physics, and anatomy. Tapping maples, water sampling, gardening, birdwatching, and pickling/fermenting provided tangible ways to teach interconnectedness to each other and the world around us.

Beekeeping taught us how to live and thrive as a community of workers and helpers. We shared the sweet rewards (pictured here) with our families in celebration.

*This honey is a product of our  
Beehives on campus  
Harvested by our Sustainability Class  
Please take one per visiting family*

*Isa Aucello*

*Emmett Clabaker*



Our classroom expanded beyond the Leelanau campus and county when a Winter Term course titled “Sharks, Service, and Sustainability” took students and faculty to The Island School in Eleuthera, Bahamas. Before departing, students studied sustainability, journal keeping, research, and Caribbean culture.

Experiences at The Island School included time with Marine Biologists, sand formation and caving studies, data gathering and reporting with Cape Eleuthera scientists, engagement with a sustainable island community, and service with the Deep Creek Middle School. A day of scuba diving (with instruction on the math and science associated with compressed air and pressure) capped off an exceptional learning experience for students and faculty alike. All returned sunkissed with a deep desire to be stewards of ecosystems and community.

"Each one of us matters, has a role to play, and makes a difference. Each one of us must take responsibility for our own lives, and above all, show respect and love for living things around us, especially each other."

– Jane Goodall



## strength-based student-centered

Schools across the nation are only starting to understand what The Leelanau School has espoused for decades. Students who love to learn will continue to learn. Students encouraged to be curious will sustain that curiosity.

“Strengths-based education is a learner-centered approach to teaching that helps students identify, articulate, and apply their individual skills relevant to their learning needs. Based on research from social work, positive psychology, and business, a strengths-based approach can help build student confidence, encourage efficacious behaviors, and support life-long learning pursuits.” \*

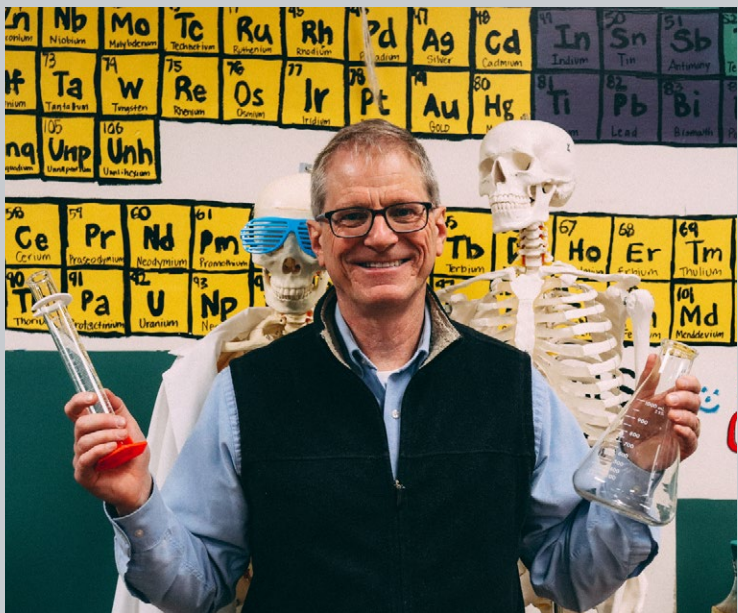
Students often arrive at Leelanau deeply discouraged by previous learning environments bent on finding gaps or weaknesses in learning and trying to fill them. This is particularly true for neurodivergent students, faced with learning or socio-emotional differences. With our strength-based approach, Leelanau identifies what a student does know, or what they can do, and builds on it. Success builds success.

Studies have also shown that identifying student assets in the classroom, also known as positive education or asset-based learning, improves engagement and perseverance and increases achievement and well-being. With this approach, it is no surprise that our students sustain enthusiasm and demonstrate resilience in their learning.

Building on positive strengths as assets is also useful in staff evaluations, parent conversations, and student disciplinary meetings, all central to a boarding school community like Leelanau.

\* NEA.org | Jim Paterson | Published: 06/09/2022





"The thing that separates The Leelanau School from other schools is the freedom. It's a lot easier to learn, it's much more fun, and it's easy to make connections. I think nowadays kids hate the school they go to. But here, there's no such thing as a bad teacher. People care. With other schools I have gone to, I found you had to have one certain point of view. And here, people aren't bringing each other down for having different views. Here is pretty darn accepting."

- Jacob Beck | Leelanau Class of 2026



"It makes me so happy to know that there are young people going out into the world that have learned how to learn. I feel so blessed to have my three years at Leelanau. I would not be who I am today if I had not had the Leelanau experience. There is hardly a day that goes by that I am not mentally thanking Leelanau for preparing me to be able to do whatever I want to do and to have a happy and thankful attitude."

- Patte Richards | Leelanau Class of 1949  
(featured here with Valedictorian Tyler Peer '23)

# sustained learning and growth

## MILESTONES AND PROGRESS

Accountability remains a key element of Leelanau's work with students, especially in a strength-based experiential school. But progress is not measured on the "third Thursday" of every month. Sitting for a two-hour exam is less than ideal for nearly everybody we know, so Leelanau faculty work closely with their students to craft smart ways to convey knowledge gained. Perhaps it is a Spanish presentation or musical performance? Or a government test divided into smaller sections on amendments, court cases, essay, and vocabulary. Wouldn't it be cool to schedule an hour-long 1x1 discussion with your chemistry teacher about actions and reactions?

Parents are kept in the loop all year long, with access to teachers and semester conferences to help support momentum and progress.

## POSITIVITY

It seems everything we do these days is posted to social media. We are judged by our clothes, words, actions, and ideas. The problematic use of social media without boundaries or safeguards is proving inadequate, addictive, and often a dangerous way for students to learn coping mechanisms or find pockets of belonging in their search for identity and purpose.

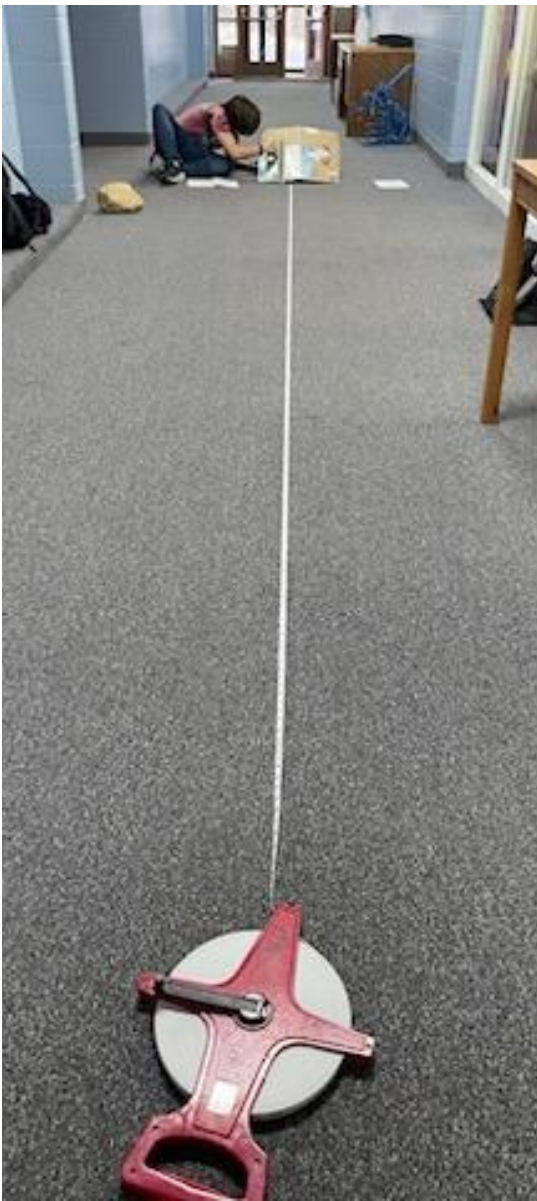
Greeting the morning with gratitude and community has proven a simple but profound way for students and faculty to begin each day. During breakfast, while seated with FAUs, students are invited to "shout out" thanks for the kind deeds, words, and the accomplishments of the people by their side. Congratulations are offered for winning tennis matches, college acceptances, or beautiful artwork. Cute boots, volunteer help, and rides to the grocery store are recognized with kudos. Practicing daily kindness sustains the day and our community, teaching lessons in positive reinforcement not found in a textbook.

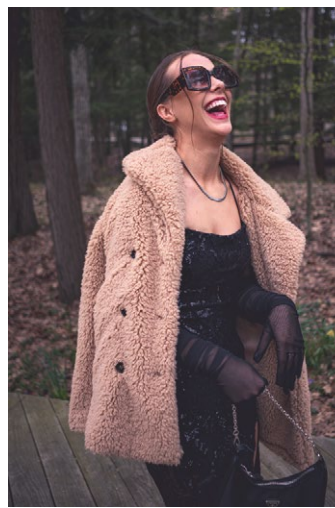
## OUR CORE VALUES

Leelanau's commitment to our seven core values extends beyond their admirable qualities. These ideals address the whole-person education we promise, provide a personal compass, and prepare students for life beyond our northern Michigan home.

We look for ways to ensure the teaching and development of core values remains central in our mission, classroom, residential halls, exploratory programs, and daily conversations. We model these behaviors for students and watch for growth in understanding from our staff, students, and parents over the course of the year.

**Living our values binds us to each other, to those who have come before, and to those who will come to know Leelanau in the future. These values sustain our community as we honor relationships, responsibilities, and belonging within a culture of acceptance.**





"I believe that my being at The Leelanau School is the single most impactful experience I have had, ever. My grades are the best they have ever been, my room is the cleanest it's ever been, but most importantly, I am the happiest I have been in years. School has always been something that took a mental and physical toll on me, but here I think everything is structured in a way that just works better. I've met so many great people and learned so much about myself here."

- Riz Peterson | 2-Year Junior



## SELF-REFLECTION AND ACCREDITATION

Our educational methodology and core values will feature prominently in our self-study and an upcoming site visit by our Independent School Accreditation Committee (ISACS). ISACS supports independent schools through professional development, networking, and accreditation services, aligned with standards of best practices in Governance, Teaching and Learning, Administration, and Operations. The accreditation process is a recurring 7-year cycle driven by a well-articulated process of self-study, strategic planning, and continuous improvement. Survey data and multiple inputs from various constituents have informed the organized reflection Leelanau has engaged in over the past few years. In fall 2023, we will welcome visitors from other independent schools to spend several days on campus reviewing our self-study and strategic plans for improvements, offering their wisdom, and affirming our current accreditation status.

We are proud of our long association with ISACS as it guides our work and growth on behalf of Leelanau's students and their families.

**"We are here to make learning visible. To learn something new is great. To develop a talent is wonderful. It proves we can overcome trepidation with resilience. But things only have value if they can be shared. Pots full of gold never spent are not worth the jars that hold them.**

**So making visible TO OTHERS the wisdom you have collected is an act of courage and generosity. And that is what keeps the experiment of humanity rolling on this planet."**

- Rob Hansen, Head of School

INTEGRITY  
LEADERSHIP  
COURAGE  
STEWARDSHIP  
INTERCONNECTEDNESS  
RESILIENCE  
AWARENESS

# Leelanau's emerging leaders

## Fred Sherriff '59

Fred "Spike" Sherriff grew up in a rural setting between Battle Creek and Kalamazoo, Michigan. He enrolled as a junior at Leelanau during the fall of 1957 at the encouragement of soon-to-be classmate Bill Winslow's '58 family. Fred graduated with the class of 1959 and enrolled at Michigan Technological University, where he received his B.S. degree in mechanical engineering in 1964. Fred went to work as a project engineer at the Post Cereal plant in Battle Creek, launching a 40-year career with the General Foods/Kraft Foods Corporations. He held many positions at the entry, mid-management, and then senior corporate levels in various functions. He retired in 2005, holding the position of VP of Engineering for Kraft Foods North America.

Fred's career required moving his wife and three children six times. He and his wife, Wanda, now spend their retirement on the Eastern Shore of Maryland (Chestertown), pursuing their many interests and enjoying their grandchildren.

**Fred initiated and sponsored Leelanau's new Winter Exploratory program featured here. (Photos to the right.) He attributes his two years at Leelanau as invaluable in preparing him to accomplish what he has over these many years. He is delighted to help build these opportunities and skills for our current students. We look forward to our next adventure in Winter 2024.**



Back row, clockwise: George Whyel '59, Fred Sherriff '59, Peggy "Muffy" VanOssenbruggen Rutledge, '59, Kathy Plum Gaffke '59, Rosalie Whyel, and Mimi Sayre '60.

## New Board Introductions - Arya Khoshnegah '81 and Peggy Miller

The Board of Trustees will introduce two new members to leadership roles at The Leelanau School in October. Alumnus Arya Khoshnegah '81 and Leelanau parent Peggy Miller (Annie '15) will bring a rich history of experience and perspective to the Board. Welcome back!

## The Class of 2024

The thirteen members of the Class of 2023 had a wide range of interests and post-Leelanau plans, including College, Art School, and travel. We will miss their musical and artistic talents, humor, fashion sense, kindness, and leadership. Safe and joyous journeys ahead, young alumni!



**"Whether verbalizing the talents they see in others, making plans to be a better mentor, or taking the risk of trusting someone or dancing on a beam 40-feet in the air... I saw a grand community at work. I saw things that didn't exist back in September. Growth is a crucial part of the human experience that The Leelanau School takes very seriously. Because if humans can learn to keep flourishing when they're teenagers, they truly can soar to endless heights for the duration of their lives."**

**- Rob Hansen, Head of School  
after Winter Exploratory**



# INTRODUCING WINTER EXPLORATORY





# climbing in together for Leelanau

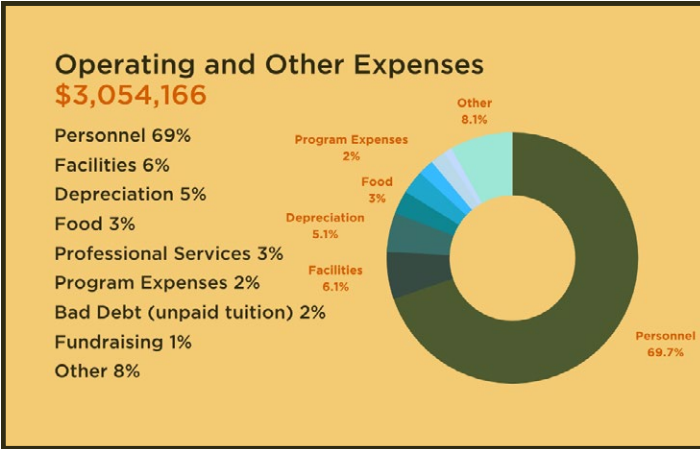
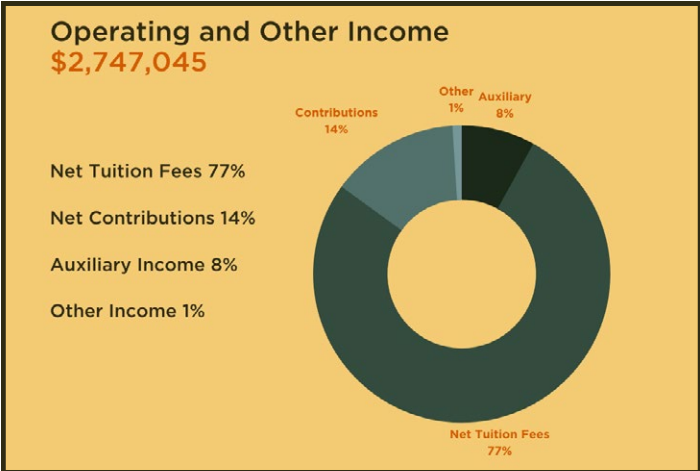
Leelanau was delighted to receive more gifts this fiscal year '23 than ever before, with a significant increase in sustaining (monthly) donors and donations under \$500. Our trustees completed their pledge to add \$100-\$200 for each returning or new donor last fall, and alumni, parents, and friends fulfilled faculty wishes for classrooms, houses, and off-campus opportunities.

While Leelanau did not see growth in total dollars raised, due in part to several transformational gifts in fiscal year '22 for capital projects and debt elimination, an increase in new contributors and our noteworthy donor loyalty are positive signs for our school's future.

Inflation, interest rates, and general economic unease did impact some contributors last season. Rest assured, all gifts of all sizes benefit our community. Your support is an investment in Leelanau learning.

We encourage you to read the following pages and discover the impact of your gifts and a few of Leelanau's current campus priorities and projects. Our Leelanau family is our rudder as we steer toward calmer waters and new shores. We are eager to have you climb in to preserve Leelanau's legacy and ensure our bright future.

## financial report July 1, 2022 - June 30, 2023



# our journey to financial sustainability



## CAPITAL PROJECTS

### Gathering with Purpose

While The Leelanau School's natural beauty is familiar to many in the Glen Arbor community, our school's mission and interiors sometimes remain a mystery. Tucked at the end of the Academic Building, our 120-seat Auditorium is one of the oldest structures on campus and offers us a way to better connect with our neighbors.

This gem of a resource is an active classroom, a venue for music and theatre, an afternoon retreat, and a gathering space for Leelanau students and faculty. But this space is often quiet and long overdue for a major update. To help restore this lovely but outdated landmark space and build connections with our regional community, The Leelanau School will partner with several area organizations, arts groups, friends, and businesses to transform the Auditorium into a shared space for the larger Glen Arbor Community. The plans include new wiring, lights, sound, seating, technology, and reception space.

Leelanau will launch this project with a chef-prepared, six-course tasting dinner on October 20, 2023. (See page 16 for event details and your invitation.) Proceeds from ticket sales will support the consulting fees and materials needed to kick off this exciting production!



## FINANCIAL AID

### So Many Students Need Leelanau in Their Lives.

To be a truly inclusive educational community, The Leelanau School must address the growing gap between affordability and possibility for many of our inquiries and accepted students. It is heartbreaking when a family suspects that The Leelanau School is the right fit for their child but self-selects out of the inquiry pool due to tuition costs. This disparity feels even worse when Leelanau identifies a strong admission candidate but cannot meet the financial needs of a family.

In the months and years ahead, Leelanau will focus on raising scholarship funds, creating named endowed funds, and seeking support from state and national foundations to help Leelanau become an educational reality for deserving students.

If this noble cause resonates with you, please contact us!



## OLD DEBT

### Old Debt Still Dogs Us.

Through the grace and generosity of four donors, Leelanau was able to pay down \$250K of its legacy debt this year. This is debt inherited from **past decades, long** before anyone currently employed by Leelanau was on staff.

Only \$1M remains, but this unwelcomed legacy costs us nearly \$100,000 a year - a sum that could help sustain our campus facilities and programs, enrich faculty salaries, transform our scholarship program, and provide professional development opportunities for our team.

We seek your help to eliminate this financial burden. Is Leelanau's financial security a priority for you? Would a graduating class/decade or two like to compete against each other to help raise these much-needed funds?

Please help us find the financial freedom we need to soar!

**To make a gift today, visit:**  
**[leelanau.org/sustain](https://leelanau.org/sustain)**  
**or return the enclosed envelope.**

# so much goodness going on!

## Charles E. Scripps Jr. Creativity Center



After more than a year of planning, architectural drawings, and material acquisition, permitting delays have paused groundbreaking for The Leelanau School's new Charles E. Scripps Jr. Creativity Center. This educational space, provided through the generosity of Leelanau parent and grandparent Charles E. Scripps will house metal, wood, and ceramic studio spaces and a laser printer/ engraver, also provided by Mr. Scripps. Our enthusiasm only grows for this creative space and resource for students.

Leelanau is delighted to launch a new "food for thought" series to help our neighbors and friends learn more about our campus and educational mission. Our first event **EAT. DRINK. THINK.** will take place on Friday, October 20.

This special evening is being provided through the generosity of Melanie and Chef Jim LaPerriere, parents of recent graduate Reece '23. Melanie is President/CEO of Cherry Central Growers, developing strategies for apple and cherry growers in Michigan, Washington, Idaho, Utah, and Ontario.

Chef Jim Laperriere is a top graduate of the Culinary Institute of America and a private chef and instructor with over 23 years of experience in high-profile restaurants across the country. He is eager to create an elegant evening for our guests.

Proceeds from ticket sales will support consulting fees to kick-start the renovation of the Leelanau School Auditorium into a shared venue and resource for our Glen Arbor Community.

**For dinner tickets or to learn more about this exciting campus and community project, visit [leelanau.org/think23](http://leelanau.org/think23) or contact Kate Olson at [kolson@leelanau.org](mailto:kolson@leelanau.org) or 231.334.5841**

**EAT.  
DRINK.  
THINK.**

*Please join us!*

A NEW "FOOD FOR THOUGHT" SERIES

created by  THE LEELANAU SCHOOL

**FRIDAY, OCT. 20, 2023**

**5:30**  
WINE AND  
HORS D'OEUVRES

**6:30**  
SIX-COURSE TASTING  
AND WINE MENU

Join us for a six-course tasting meal created by Culinary Institute of America alum and celebrated guest Chef Jim LaPerriere of Distinctive Dining. [distinctivedining.biz](http://distinctivedining.biz)

The menu and evening are sure to please mind and body. Join us to learn more about what we are cooking up at The Leelanau School!

**Tickets \$200\* per person**  
includes food and wine, remarks from school and local community members, and a performance from Interlochen.

**Purchase tickets at [leelanau.org/think23](http://leelanau.org/think23) or by calling Kate Olson at 231.334.5841.**

\*Proceeds will benefit the renovation and transformation of Leelanau's School Auditorium into a shared space for the greater Glen Arbor Community. Questions? Please contact Kate Olson at [kolson@leelanau.org](mailto:kolson@leelanau.org).





# Cook Learning Commons

Doug and Dianne Cook and family took an additional step to enhance the quality of study in Leelanau's Learning Commons. Through their generosity, harsh and dated lighting was replaced with custom beams and energy efficient LED bulbs. These changes warmed up this space, and completed a dramatic transformation of this versatile community classroom.

## faculty wish list

Leelanau friends and family turned out in force to fulfill faculty wishes throughout the year. 3-D printers, watercolor paints, furniture, kitchen appliances, new binoculars, games, stress balls, a weather station, and a new gas grill were just a few of the items that enhanced classrooms and residential houses. **We are grateful for every gift of any size that benefits our hardworking and devoted teachers!**

A fresh list will be announced later this fall if you would like to help.



## Add Your Name. Leave Your Footprint. Lend A Hand.

We are truly grateful for our generous donors; the alumni, parents, friends, and supporters who are committed to the mission and marvel of Leelanau. They help us secure financial stability and guide the future of our educational community.

By lending financial support, donating time, sharing Leelanau's social media, or referring a student, you invest in the future of our students and faculty. Leelanau changes the lives of young learners and remains a compass for our graduates.

## YOUR GIFTS HELP US SUSTAIN THE GROWTH WE SEEK!

To give today or learn more about different ways to help:



visit [leelanau.org/sustain](https://leelanau.org/sustain)



email Kate Olson at [kolson@leelanau.org](mailto:kolson@leelanau.org)



return the enclosed envelope



call Kate @ 231.334.5841

# the gifts that sustained us in 2022-2023

The Leelanau School is honored to recognize these alumni, parents, friends, foundations, and organizations that contributed to our program, capital, and scholarship funds or made gifts in-kind between July 1, 2022 and June 30, 2023.

\* Alumni Gift  
+ Sustaining/Monthly Gift  
^ Matching or Corporate Gift

## LEADERSHIP GIFTS (\$10,000+)

Anonymous  
George\* and Barbara\* Cochran  
Joan Conway  
Joan Conway Family Fund  
Doug and Dianne Cook  
Feldco^  
Mary Beth Hardwicke and Bob Provenzano  
Kalamazoo Community Foundation  
Kemper Corporation^  
Mr. and Mrs. Eugene Miller III  
Dellora A. & Lester J. Norris Foundation  
John and Janet Norris  
Charles E. Scripps Jr.  
Fred\* and Wanda Sherriff  
Jane\* and John Todd III

Boeing^  
Patrick and Tamara Boyle  
Elaine Bridges  
Roger E. Brown Jr.\* and Denise Carty-Brown  
Meagan Darlington Bunker\*  
Kate Caliri+ and Stephen Spiegel  
Amy Chalup\*  
Daniel Chapman\*  
Cherry Republic^  
Richard Chormann  
Robert Condon  
Ralph\* and Carolyn Cram  
Catherine Creighton  
Dr. John Crouch\*  
Tricia and Shawn Denton+

## INDIVIDUAL AND ORGANIZATIONAL GIFTS

Barbara Alldredge  
AmazonSmile  
Anonymous\*  
Anonymous  
Kevin and Michelle Aucello  
Michael Beery  
Robert Behar and Sharon Flaim  
Dawson Bell\*  
David and Lindsay Best  
Best Medical Services PLC^  
Mark and Alison Birkmeier  
Russell\* and Trary Bishop III  
Joe and Elizabeth Blondia  
James Blondia

Kayla Dietz\*+  
James and Velma DorseyC. William\*  
and Kathryn Dougherty  
Marylyn Doyle\*  
Sylvia and Tom Duncan  
Rob\* and Becca Dymond  
Prof. Dena Eber and Dr. Blair Grubb  
Mary Fellenz  
James A. and Patricia Fitzgerald  
JD Friley  
Mary Anne Thompson Fuchs\*  
Asaf Fulks\*  
Kira Fulks  
Kate Gallup+  
Barb and Kevin Garrow  
David and Katherine Gerlach  
Emily Gordon+  
Helen\* and Edward Greene  
Hope O'Quinn Hana '69\*+  
Jonathan Handley\*  
Pat Hanniford  
Rob and Jennifer Hansen

**“Appreciation is a wonderful thing. It makes what is excellent in others belong to us as well.” - Voltaire**

Mica Harrison Loosemore  
Erich Hasselbusch\*  
Cory Haven\*  
Eileen Kamerick and Victor Heckler in  
honor of Connor Heckler '12  
Scott Hedberg\* in memory of  
Steven Jackson\*  
Steven and Kathryn Holl  
Bruce Hood  
Laura Hood  
Gretchen Hueni  
Carolyn and Clark Hulse in honor of  
Daniel Hulse '98  
Michael Jarvis and Lynne Brach+  
Morgan Jarvis  
Joanne Sprouse  
Vance and Jessica Johnston  
William Jollie  
Chuck Jones\*  
Rob and Barb Karner  
Arya\* and Mary Jane Khoshnegah  
Daniel and Cecelia Kim  
Gretchen Knoblock\*  
Jim and Melanie LaPerriere

Bob LaPerriere  
JP\* and Karina Larkin+  
Leelanau Country 4-H  
Dallas Lippincott\*+  
Chris and Amie Lipscomb+  
Richard\* and Jeanann Lungerhausen  
Jennifer and Travis Madsen  
Dr. Fred Malmstrom\* and Susan Gates  
Danita Lively and Douglas Martin  
Biff\* and Josie Mautz  
James and Judith McCabe  
McCabe Family Foundation  
Kevin\* and Denise McCarthy  
James T. McIntyre '65\*  
Alison McLeskey\*  
Laura and Steve Melvin  
John Merten\*  
Cal Meyers+  
Sue\* and Richard Miller\*  
Bryant and Wendy Mitchell  
Jane Monto and Benjamin Taub

Daniel and Anne Mosqueda+  
Mary B. Myers  
John and Jean Neely  
Network for Good  
John Newsome  
Robert E. O'Quinn, Jr.  
Mary Beth Oddy \*  
R.E. Olds Foundation  
Jim\* and Roberta Olson  
Kate and Rocky Olson  
Constance Olson  
John P. Olson\*  
Julie\* and Nicholas Paron  
Lee and Alexandra Perez  
Cris Pina-Gautier+  
Ann Reardon\*  
Patte Richards\*+  
Mary Rodewig  
John Sabin '66\*  
Irene Savoyat  
Pat\* and Jim Seavitt  
David Shepherd in memory of Marnie  
Shepherd\*  
Kaori Shionoya+

Sally and Doug Smith  
Sally & Doug Smith Charitable Fund  
Richard Smith and Katie McDonald-Smith  
Kim and David Speicher  
Eddie Steinhauer and Linda Rex  
Gail and Alan Sugar  
Bob and Stephanie Sutherland  
Dee Tarpoff\*  
Sara Thompson\*  
Peter and Kathy Van Dessel  
Timothy and Jill Vollbrecht  
Jeffrey and Jill Wagenberg  
Norm and Mimi Wheeler  
Williams-Sonoma, Inc. ^  
Bill\* and Francie Winslow  
John\* and Margaret Wonser  
Callie Yax\* and Gavin M. Smith  
YourCause LLC^  
Bruce Zimmerman\*  
Bob Zimmerman\*



Thanksgiving and Holiday Feasts



Senior Seminar

## sustaining tradition and innovation

*excerpted from remarks by Rob Hansen during Alumni Weekend*

"The title I scribbled on my remarks tonight is **'We are not a museum.'**

When you visit a museum you better understand your place in the world by looking back at history. A preservation of people, places and things. Nouns. When you come to a school, you learn your place by looking into the future. Schools are not here to preserve yesterday but to serve tomorrow. To be a school is to be a verb, not a noun.

When you were a child, you came to Leelanau for a reason — a child at an inflection point. The same is true today. We welcome young people, ready to make a move in a positive direction.

When I speak to alumni, they tell stories about the teachers, dorm instructors, cooks, and classmates who influenced them. They felt supported by a team of adults who pushed them out of their comfort zone long enough to glimpse what life could be like. And that stuck. And I will tell you that the team we have today will be the heroes spoken about for generations yet to come.

**To be an educator is to be in communion with the truth that education causes change.** WE cause change. Learning causes betterment, knowledge fuels innovation, and curiosity is a lifeboat toward joy in a sea of false fears.

To be a school - a good school - is to be an environment, an ecology, a garden of rich tilled soil with plenty of sunlight, and the waters of celebration. It is a place where curiosity begets wisdom, wisdom begets empathy, and empathy begets service. We know a lifetime of service can heal the world and secure our joy.

So, The Leelanau School is not a museum. It is for NOW, creating the future. Just as it always has. Leelanau is a living thing. It is in constant growth and adaptation. It is evolving with the generations, responding to the advancement of technology and information, a growing knowledge of brain development, and a better understanding of mental health. It teaches the integration of cultures, the dynamic social fabric of the world, and the ebb and flow of economies, politics, and pandemics.

Leelanau has always worked to remain relevant and be the safe incubator of belonging, wisdom, and self-determination. Just as the school served you, we endeavor to meet tomorrow's needs today.

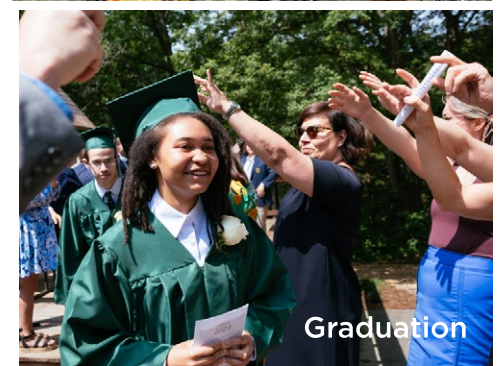
**We do this through tradition and innovation. We do this with intention and compassion. We do this because we remain The Leelanau School."**



Lawn and Tree Ceremony



Spirit Week



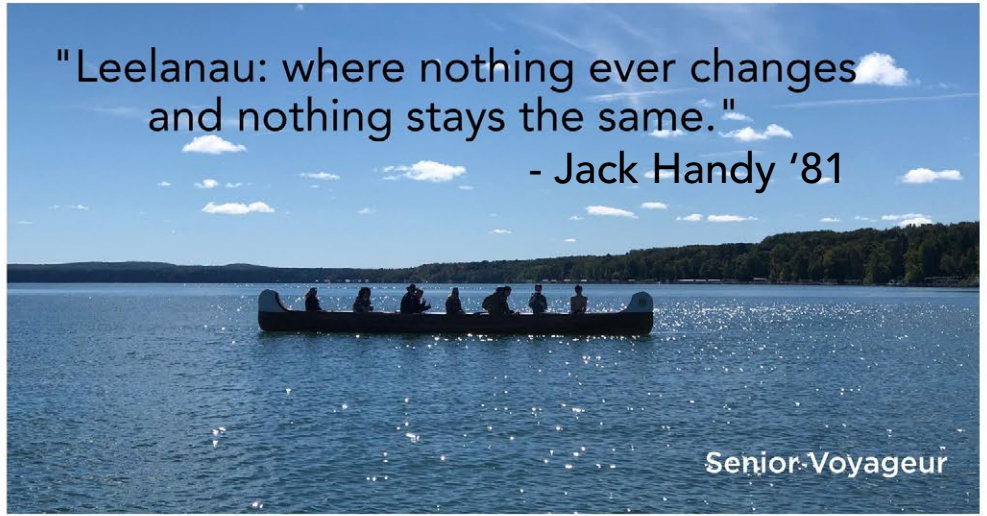
Graduation



Outdoor Challenge



Apple Day



"Leelanau: where nothing ever changes and nothing stays the same."

- Jack Handy '81

Senior Voyageur



Walking Partners



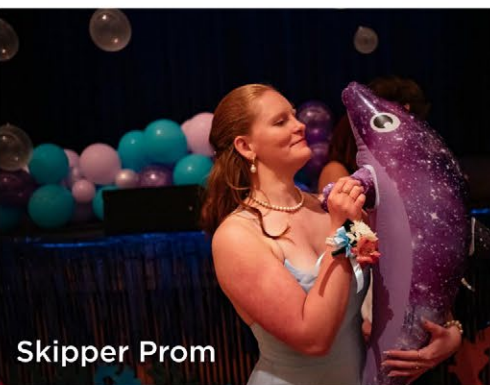
Fall Arts Collaborative



Rose Ceremony



Fall Exploratory



Skipper Prom



FAU Birthdays



Fall Exploratory

# SUSTAINED FRIENDSHIPS

## Adapted from a May 2023 Facebook Post from Michael Belsky '78 @ Classmate and Friend, Steve Cobb '77

With age comes nostalgia, an appreciation and yearning for the past. So I felt compelled to write this.

This is a picture of my friend from high school Steve Cobb. (see photo to right) We went to the Leelanau School together, back in the mid to late '70s. This was and is a small boarding school in Leelanau County, Michigan, founded in 1929.

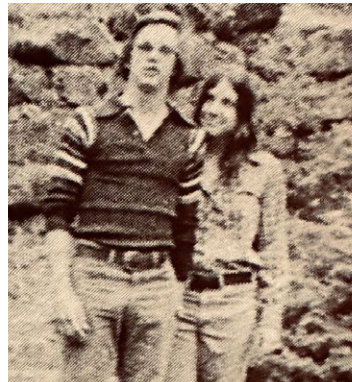
It is not only a special place for its beautiful setting in northern Michigan, but also for how it got in front of so many trains going down the wrong tracks and literally stood in front of each and turned them around into unimaginable directions.

But by far, one of the greatest assets provided by the school was the bonds of friendship that it enabled. When you live with people 24/7, even for a year, it is the equivalent of 10 to 20 years of friendship for people who do not board together.

But I digress, Steve Cobb was a senior when I arrived as a sophomore. He was and is a solid person. As this picture shows clearly, a really handsome man back in the day. He was a heartthrob of many Leelaladies. He was a great athlete, including soccer and skiing to name a few. I was always proud to have him as a teammate. Steve had a very positive disposition indicated by a great smile and sense of humor. He is that type of person that without effort draws people near.

If my memory serves me correctly his family, like many of us, hailed from the Detroit area. But his family also has a great cabin or two right off of M22 on Big Glen Lake. We often practiced breaking the rules set out in the student handbook after school and on weekends. As they say, practice makes perfect.

The reason I am writing is that on his birthday, oddly enough I wanted to share a gift he gave me.



**Steve Cobb with Meagan Sennett 1976-1977**

In 1975, when I arrived at school as a 16-year-old kid from Rochester, Michigan, always in and out of trouble, I was scared sh\*\* about attending boarding school. Over time my fear diminished and I acclimated. This did not happen by accident but by the decency of people like Steve Cobb.

There were a lot of seniors that I came to know and admire. Mike Hovey, Dave Brown, Rob Roeper, Scotty Klein to name a few. But for me Steve was a role model. Never a bully, always funny, positive, upbeat, inclusive and encouraging. I was a little shy back then but gained confidence over time.

Unequivocally Steve was the one person I most wanted to emulate. I feel that way today when I occasionally see him up north as we call it. He has gone on to be a husband, father, and successful business person. I am sure, as he did at Leelanau, he has accumulated many friends over the years who share my sentiments.

Steve is fortunate to continue to live in Traverse City and still has the family homestead near the school on Big Glen.

Happy Birthday my friend and thanks for your gift to me. You made my transition to boarding school much easier.

I wish you many more birthdays to come in great health and happiness. I know I speak for all of the Leelanau nation that knows you.

*Mike Belsky earned his Bachelor's degree in Urban Studies/Affairs from Lake Forest College, and his Masters in Public Policy Analysis from The University of Chicago. He is Managing Director at Greenwich Investment Management, and recently retired as Mayor of Highland Park, IL.*



## THE LEELANAU ALUMNI REUNION WILL TAKE A SABBATICAL IN 2024

Over the past several years, alumni have commented on the challenges of traveling to northern Michigan in June and July when flights are expensive, housing is scarce, and calendars are often reserved for family vacations, summer camps, weddings, and graduations. The pandemic made reuniting complicated, too.

Leelanau will take the 2024 year to reflect, study, and better determine when and why we gather. Are there alumni who would like to help recruit classmates to the events? Perhaps we need to extend the weekend, adding workshops, concerts, pickleball tournaments, voyageur, or backpacking trips? Maybe we should reduce the frequency of reunions or transform the experience into a family-friendly fest. Our hope by the end of our work is to create Reunions that are more robust, entertaining, and filled with the people and activities you care about most. More hikes, paddles, concerts, bonfires, food, and fun. More memories to share and collect.

The Admission and Alumni Offices also plan to hit the road again to visit friends and prospective families in their own neighborhoods. If you would like to sponsor a gathering - coffee hours, cocktail parties, lectures, open houses, hiking, or canoe trips - these are just a few of the ideas we have in mind - let us know. For local alumni, consider ways to gather at the Leelanau Beach for a fire or friend circle. Lunch in the Dining Room, anyone?

A Reunion survey will follow in the new year via mail and email. Your voice still matters to us. Please speak up!

And know you are ALWAYS welcome back on campus when you need a friendly face, Crystal River revival, or a trip down memory lane. Please let us know if you are planning a visit. We'd love to say hello and take your photo for our e-newsletters.



**PLEASE SAVE THE DATE**  
and join us for the next  
**Leelanau School Reunion**  
**June 20 - 22, 2025**





1 Old Homestead Rd  
Glen Arbor, MI 49636



[leelanau.org/sustain](https://leelanau.org/sustain)